

The Yanmar Wooden Boatshop 2016 Wooden Boat Festival 12th – 14th March, 2016

Organising Authority: The Royal Geelong Yacht Club
Geelong, Australia

SAILING INSTRUCTIONS

YANMAR



RUTH PLUMMER

AUSTRALIAN CONTAINER LEASING

TOM SMEATON PHOTOGRAPHY

LIL-BREY ON BARWON HOLIDAY ACCOMMODATION

GENERAL SAILING INSTRUCTIONS

1. **RULES:**

- 1.1 The Festival will be governed by the rules as defined in the Racing Rules of Sailing (RRS) and Yachting Australia (YA) Special Regulations Part 1 for Racing Boats and Part 2 for Off the Beach Boats (OTB).
- 1.2 The following YA Special Regulations Categories will apply:

| RACE or CLASS | CATEGORY |
|--|-------------------|
| Portarlinton to Geelong Passage Races. Classics, Modern, Couta & Tumlarins | Cat 7 + VHF Radio |
| Corio Bay Races for Classics, Modern, Couta Boats & Tumlarins | Cat 7 |
| Heron Class, OTB Wooden Boats | Part 2 |

- 1.3 **Competitor's attention is drawn to the Fundamental Rule 4: Decision to Race - "The responsibility for a boat's decision to participate or continue racing is hers alone".**

2. **NOTICES TO COMPETITORS:**

Notices to competitors will be posted on the official notice board located beside the slipway adjacent to the main club building.

3. **CHANGES TO SAILING INSTRUCTIONS:**

Any changes to the sailing instructions will be posted before 0900 on the day it will take effect, except that any change to the schedules of races will be posted by 2000 on the day before it will take effect.

4. **SIGNALS MADE ASHORE:**

- 4.1 Signals made ashore will be displayed on the Flag Mast North of the main club house.
- 4.2 When flag AP is displayed ashore, '1 minute' is replaced with 'not less than 45 minutes' in the race signal AP

5. **SCHEDULE OF RACES:**

| DATE: | EVENT - CLASS: | CLASS FLAG: | TIME OF FIRST WARNING SIGNAL: |
|-------------------------------|---|--------------------|--|
| Sat 12 th Mar 2016 | Portarlinton to Geelong Passage Race (Appendix "A") | | 11:55 hrs |
| | Couta Boats | Flag "O" | |
| | Classic & Modern Wooden Yachts | Flag "Q" | |
| | Tumlarins | Flag "W" | |
| | | | |
| | Heron Traveller Series 1 x WL | Flag "F" | 12:55 hrs. |
| | OTB Wooden Boats 1 x WL | Flag "V" | |
| | | | |
| Sun 13 th Mar 2016 | Ruth Plummer Grande Parade of Boats and Cavalcade of Sail | | 11:30 Hrs |
| | | | |
| | Heron Traveller Series 2 x WL | Flag "F" | 12:55 hrs. |
| | OTB Wooden Boats 2 x WL | Flag "V" | |
| | | | |
| | Corio Bay Course (Appendix "C") | | 12:25 hrs |
| | Couta Boats | Flag "O" | |
| | Classic & Modern Wooden Yachts | Flag "Q" | |
| | Tumlarins | Flag "W" | |
| | VRCA Navigation Rally for Wooden Boats | | Approx. 09:00 hrs Start times to be issued by Organizer |

6. **PROTESTS:**

- 6.1 A boat intending to protest is requested to notify the Race Committee Vessel immediately after finishing.
- 6.2 Protest forms are available from the RGYC Festival Office and should be lodged there within the protest time limit, which is 90 minutes after the last boat in the protesting boat's division or class has finished the last race of the day.
- 6.3 Notices will be posted on the Official Notice Board as soon as practicable to inform competitors of the time and place of hearings in which they are parties or named as witnesses.
- 6.4 On the last scheduled day of racing a request for reopening a hearing shall be delivered:-
 - (a) Within the Protest time limit if the requesting party was informed of the decision on the previous day.
 - (b) No later than 30 minutes after the requesting party was informed of the decision on that day. This changes Rule 66.
- 6.5 On the last scheduled day of racing a request for redress based on a protest committee decision shall be delivered no later than 30 minutes after the decision was posted. This changes rule 62.2

7. **SCORING:**

- 7.1 One race is required to be completed to constitute a series.
- 7.2 A boat's series score shall be the total of her race scores. This changes rule A2.

8. **SAFETY REGULATIONS:**

- 8.1 Boats are required to comply with the relevant provisions as set out in the current Victorian Marine Act and Regulations.
- 8.2 On boats without lifelines, all crew shall wear a suitable PFD at all times while racing.
- 8.3 Unless in use, no part of any anchor may project forward of the bow at any time while racing.
- 8.4 Competitors retiring from a race are requested to advise the Race Committee vessel or "RG Base" Radio operator on VHF channel 71.
- 8.5 **Commercial Shipping**
 - (a) Port Regulations specify that boats shall not interfere with commercial shipping on Port Phillip or Corio Bay. Any boat found to have interfered with commercial shipping shall be disqualified without a hearing. This changes Rule 63.1. A boat may use its engine to avoid such interference but shall lodge details in writing to the Race Committee within ninety (90) minutes of finishing the last race of the day. A boat using its engine shall not gain a benefit in the use of the engine. Any boat using its engine shall bring the boat to a complete stop before continuing the race. The Race Committee, at its discretion may allow such use with or without further penalty. This changes Rule 42.
 - (b) The owner or person in charge of a boat found to have impeded the operation of commercial shipping shall be responsible for all obligations resulting from the reported incident.

9. **OFFICIAL BOATS:**

Race Official Vessels will display the RGYC burgee. When not racing, boats are particularly requested to give Race Official Vessels right of way and ample room to manoeuvre.

10. **RADIO COMMUNICATIONS:**

- 10.1 Except in an emergency, a boat shall neither make radio transmissions while racing nor receive radio communications not available to all boats. This restriction also applies to mobile telephone communications.
- 10.2 The following information is provided for use in the event of emergency:
 - (a) The Race Committee and RGYC Race Control "RG Base" will monitor VHF Channels 71 and 16 throughout the regatta.
 - (b) The Race Committee can be contacted by calling the Race Committee Vessel "Alpha 1" on VHF 71 or RGYC Race Control "RG Base" on channel VHF 71 or 16
- 10.3 Race Committee communications will be via VHF 71. All boats are requested to monitor VHF 71 at all times.
- 10.4 The Race Committee may broadcast the course to be sailed, names/sail numbers of OCS boats, and/or other information of interest to competitors on VHF 71. Any failure of, or defect in such a broadcast will not be grounds for redress. This changes Rules 60.1 and 62

11. **PRIZES:**

Prizes will be given at the discretion of the organizing authority and the Wooden Boat festival Committee and also the following events:-

- The City of Greater Geelong Passage Race for Modern Yachts
- The centralgeelong.com.au Passage Race for Classic Wooden Yachts
- The centralgeelong.com.au Passage Race for Coutu Boats
- The centralgeelong.com.au Passage Race for Tumlarins
- The Yanmar Wooden Boatshop Coutu Boat Cup
- The woodenboat.com.au Corio Bay Classic Wooden Yacht Cup
- The City of Greater Geelong Corio Bay Cup for Modern Wooden Yachts
- The 6ft6 Wines Concourse d'Elegance for Wooden Yachts
- The Cayzer Boats Concourse d'Elegance for Wooden Power Boats
- The VRCA Navigation Rally for Wooden Power Boats
- The RGYC Heron Traveller Series

12. **DISCLAIMER OF LIABILITY:**

All those taking part in this regatta do so at their own risk and responsibility and are responsible for the seaworthiness of a boat whose entry is accepted and for the sufficiency and adequacy of its equipment. Neither RGYC nor The Wooden Boat Festival, staff or volunteers shall accept liability or responsibility whatsoever for death or any personal injury or material damage sustained by participants before during or after the regatta. The Notice of Race and these Sailing Instructions in no way limit or reduce the complete and unlimited responsibilities of a competitor for the management and care of a boat she or he may be sailing in the championship. Also see Rule 4, Decision to Race.

13. **INSURANCE:**

Each participating boat shall be insured with valid third party liability insurance to a minimum cover of \$10,000,000.00 (Ten Million Dollars) for the duration of the Festival.

APPENDIX “A”



The centralgeelong.com.au Passage Race for Classic Yachts **The Tourism Victoria Passage Race for Couta Boats** **The centralgeelong.com.au Passage Race for Tumlarins** **The eventsgeelong.com.au Passage Race for Modern Yachts**

PORTARLINGTON TO GEELONG (Distance approximately 15.4 nm)

1. SCHEDULE OF RACES:

| DATE: | EVENT - CLASS: | CLASS FLAG: | TIME OF FIRST WARNING SIGNAL: |
|-------------------------------|--------------------------------------|-------------|-------------------------------|
| Sat 12 th Mar 2016 | Portarlinton to Geelong Passage Race | | 11:55 hrs |
| | Couta Boats | Flag “O” | |
| | Classic & Modern Wooden Yachts | Flag “Q” | |
| | Tumlarins | Flag “W” | |

2. Take PARTICULAR CARE of the Point Richards Bank.

Be aware of the sand bar on BOTH sides of the Hopetoun Channel between Beacons 1,2,3,4,5,6,7,8,9 &10

3. THE COURSE:

The table below shows the order in which marks are to be passed and the side each mark is to be left.
(Ref Attachment “A” for course diagram)

| COURSE MARK | MARK DESCRIPTION | REQUIRED SIDE |
|-----------------------|---|---------------|
| STARTING LINE | Approx. 0.5 nm North of Portarlinton Pier | |
| STEAMBOAT PILE | Approx. S 38°06.68', E 144°30.98' | Port |
| WILSON SPIT BEACON | Approx. S 38°08.13', E 144°30.12' | Starboard |
| ALCOA OUTER LEAD | Approx. S 38°06.83', E 144°27.72' | Port |
| 1-2 HOPETOUN CHANNEL | | Gate |
| 9-10 HOPETOUN CHANNEL | | Gate |
| FINISHING LINE | See below | |

4. THE START:

- 5.1 The Starting Area will be approximately 0.5 nm North of the Portarlinton Pier.
- 5.2 Races will be started using Rule 26 with the warning signal given five (5) minutes before the starting signal.
- 5.3 The starting line will be between the signal mast displaying an orange flag on the Race Committee Vessel and the course side of the starting mark (red and white inflatable buoy)

5. FINISHING LINE:

- 5.1 The finishing area will be approximately 0.3 nm to the North-East of the RGYC Marina.
- 5.2 The finishing line will be between the signal mast displaying an orange flag on the Race Committee Vessel and the course side of the finishing mark (red and white inflatable buoy).

6.3 After finishing please keep clear of other boats finishing and other events which may be in progress on Corio Bay.

6. **TIME LIMIT:**

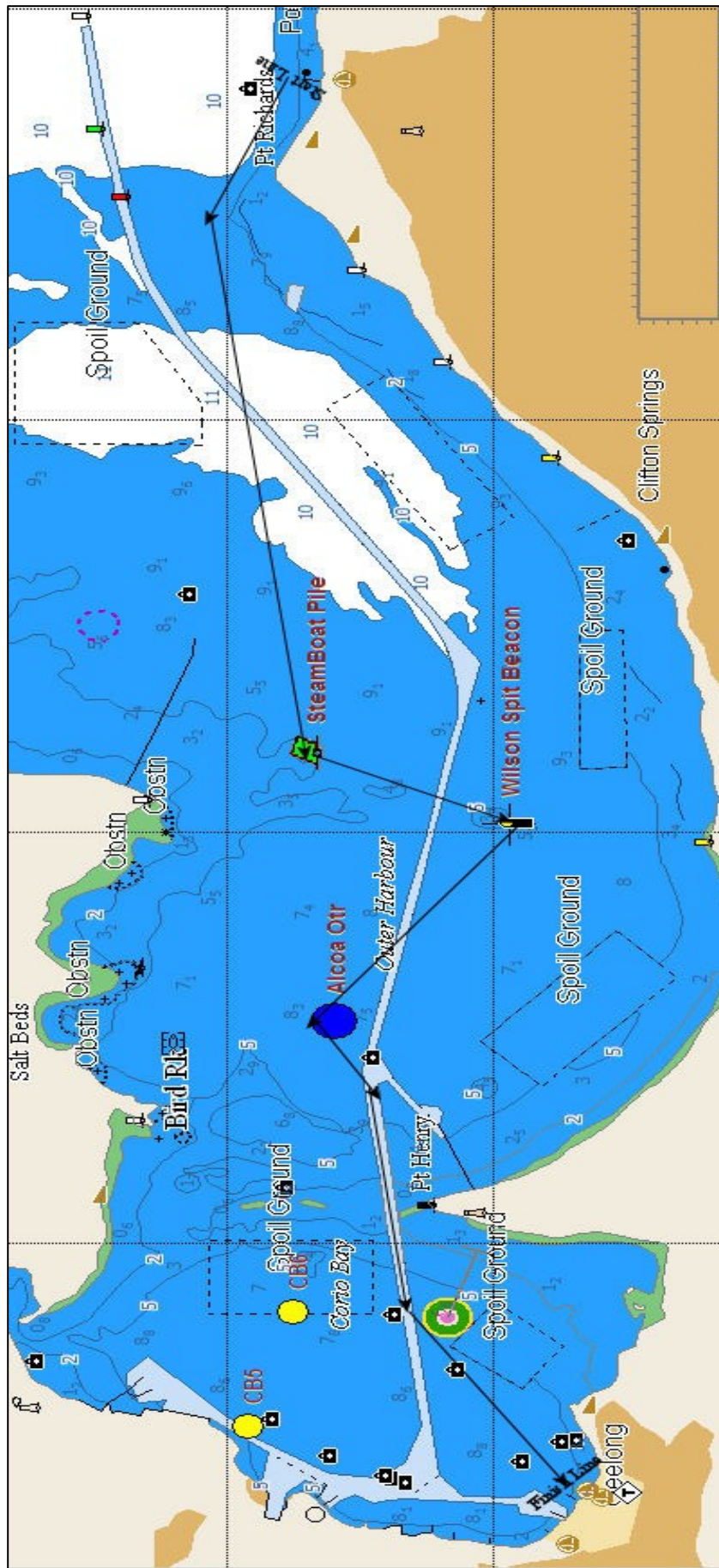
6.1 The time limit for boats to sail the course and finish is 1800 hours.

6.2 Boats failing to finish within the time limit will be scored “Did Not Finish” without a hearing. This changes Rules 35, A4 and A5.

7. **CHECK IN:**

Prior to the warning signal, boats shall sign-on to the Race Committee Vessel (Alpha 1) by radio (VHF 71) with their boat name, sail number and number of persons on board and have the call acknowledged. Boats not signing-on may be scored DNC without a hearing. This changes Rules A4, A5 and 63.1

Attachment "A"



"Not to Scale" Do not use for navigation

APPENDIX “B”



Heron Traveller Series RGYC – OTB Wooden Boat Series



1. SCHEDULE OF RACES:

| DATE | Number of Races | TIME of FIRST WARNING SIGNAL |
|-------------------------------------|-----------------|------------------------------|
| Sat 12th Mar 2016 | | 12:55 hrs |
| Heron | 1 | |
| OTB Wooden Boat Series | 1 | |
| Sun 13th Mar 2016 | | 12:55 hrs |
| Heron | 2 | |
| OTB Wooden Boat Series | 2 | |

On the final day of racing no warning signal shall be made after 16:00 hrs.

2. CLASS FLAG:

| | |
|-----------------|----------|
| Heron | Flag “F” |
| OTB Wooden Boat | Flag “V” |

3. RACING AREA:

Racing will be in the area between the Cunningham Pier and the eastern moorings.

4. THE COURSES:

4.1 Courses will be Windward-Leeward type courses as described in Attachment “B”

4.2 Legs of the course will not be changed after the preparatory signal. This changes rule 33

5. MARKS:

Marks 1 and 2 will be orange cylinders.

The Start/Finish mark will be a Red and White Cone.

6. THE START:

6.1 Races will be started using Rule 26 with the warning signal given five (5) minutes before the starting signal.

6.2 The starting line will be between the signal mast displaying an orange flag on the Race Committee Vessel and the course side of the starting mark.

7. THE FINISH:

The finishing line will be between the signal mast displaying an orange flag on the Race Committee Vessel and the course side of the finishing mark.

8. TIME LIMIT:

Time limit for the first boat to sail the course and finish is 1.5 hours.

Boats failing to finish within 30 minutes after the first boat sails the course and finishes will be scored “Did Not Finish” without a hearing. This changes Rule 35, A4 and A5.

9. CHECK-OUT AND CHECK-IN

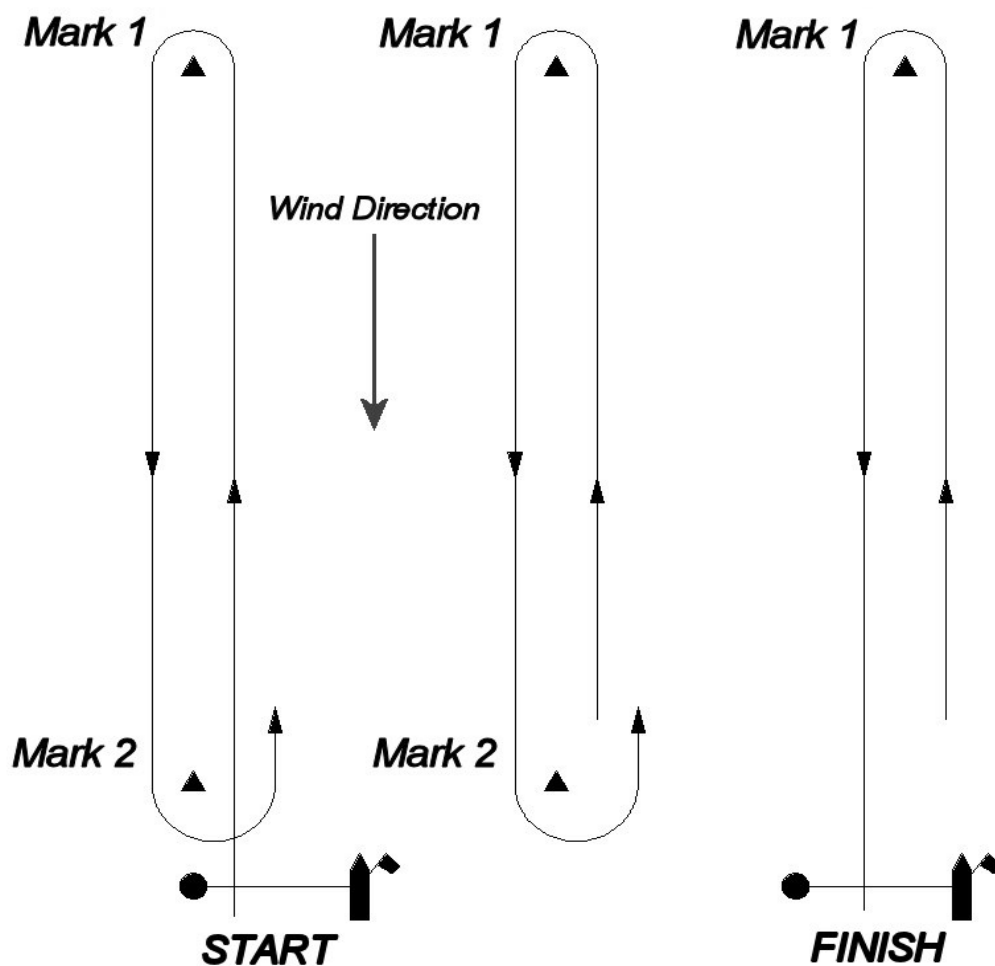
Boats are to check out and in by entering their details on the sheets provided on the desk in the breezeway under the OTB clubrooms.

Attachment “B”

Windward-Leeward Course

Designated by Naval Numeral “1” 
Displayed on the Race Committee Vessel

Start – 1 – 2 – 1 – 2 – 1 -- Finish



APPENDIX “C”



The woodenboat.com.au Corio Bay Cup for Classic Yachts **The eventsgeelong.com.au Corio Bay Cup for Modern Yachts** **The Power Equipment – Torqeedo Corio Bay Couta Boat Cup**


1. SCHEDULE OF RACES

| DATE: | CLASS: | CLASS FLAG: | TIME OF FIRST WARNING SIGNAL: |
|-------------------------------|--------------------------------|-------------|-------------------------------|
| Sun 13 th Mar 2016 | | | 12:25 hrs |
| | Couta Boats | Flag “O” | |
| | Classic & Modern Wooden Yachts | Flag “Q” | |
| | Tumlarins | Flag “W” | |

2. RACING AREA:

The racing area will be the waters of Corio Bay. (ref Attachment “C”)

3. THE COURSE: (Refer to Attachment “C”)

3.1 The course will be signified by the display of Numeral Pennant 1 (one)  on the Race Committee Vessel.

3.2 This course is a triangle shape, with marks to be left to STARBOARD.

| COURSE MARK | MARK DESCRIPTION |
|-----------------|---|
| STARTING LINE | |
| Mark 1 | Orange Buoy ~ 200 Mtrs North-East Cunningham Pier |
| City Channel #2 | Red Beacon ~ S38° 07.773' E144° 21.954' |
| CB3 | Yellow Mark ~ S38° 08.450' E144° 22.870' |
| Mark 1 | Orange Buoy ~ 200 Mtrs North-East Cunningham Pier |
| City Channel #2 | Red Beacon ~ S38° 07.773' E144° 21.954' |
| CB3 | Yellow Mark ~ S38° 08.450' E144° 22.870' |
| FINISHING LINE | |

3.3 Numeral Pennant 1 (one) over Flag “R” indicates the course is to be sailed in the Reverse Direction, leaving marks on the opposite hand.

4. THE START:

4.1 The starting area will be located North-East of the RGYC Marina.

4.2 Races will be started using Rule 26 with the warning signal given five (5) minutes before the starting signal.

4.3 The starting line shall be between the signal mast displaying an orange flag on the Race Committee Vessel and the course side of the starting mark (red and white inflatable buoy)

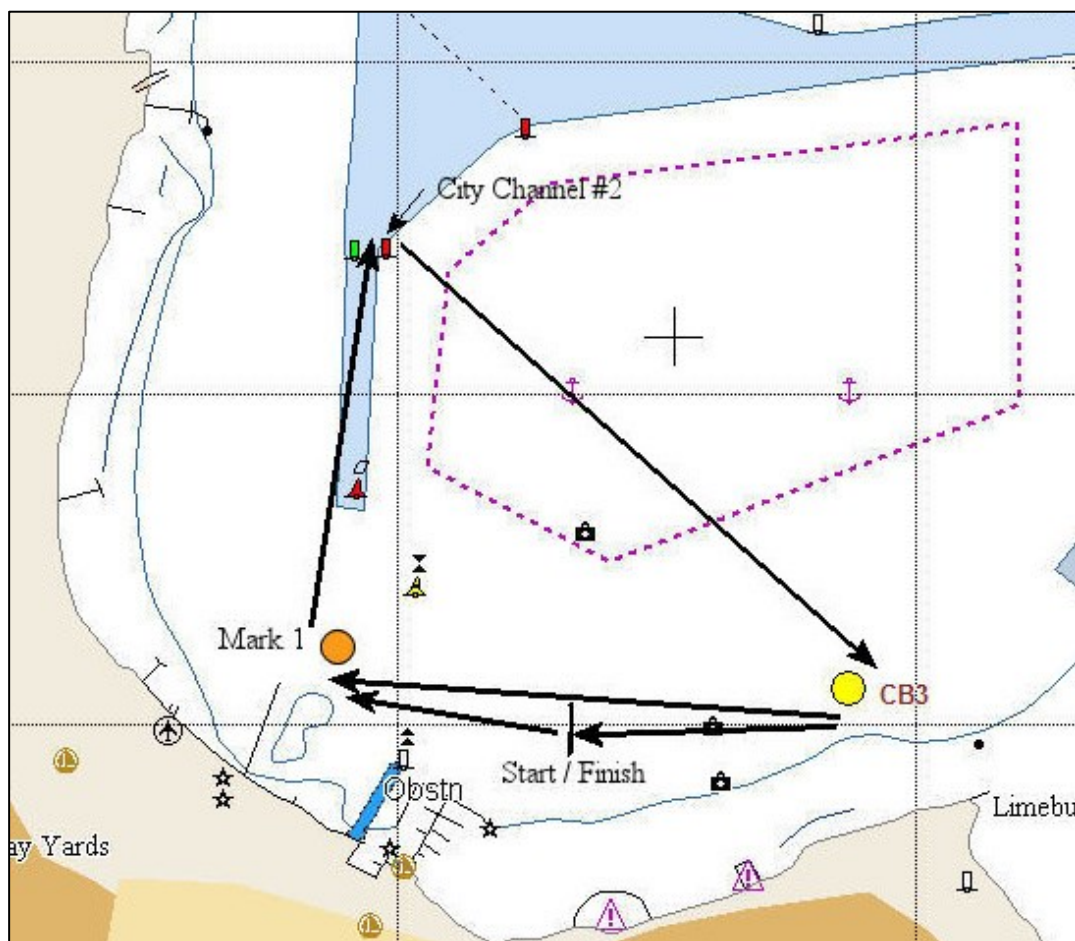
5. THE FINISH:

5.1 The finishing area will be located North-East of the RGYC Marina.

5.2 The finishing line shall be between the signal mast displaying an orange flag on the Race Committee Vessel and the course side of the finishing mark (red and white inflatable buoy)

6. **TIME LIMIT:**
 - 6.1 The time limit for the first boat to sail the course and finish is 2 hours, otherwise the race will be abandoned.
 - 6.2 Boats failing to finish within forty five (45) minutes after the first boat sails the course and finishes will be scored “Did Not Finish (DNF)” without a hearing. This changes Rules 35, A4 and A5.

Attachment “C”



“Not to Scale” Do not use for navigation

Corio Bay Course for Classic Yachts, Modern Wooden Yachts, Couta Boats and Tumlarins

**Start – Mark 1 – City Channel #2 – CB3 – Mark 1 –
City Channel #2 –CB3 – Finish**

APPENDIX “D”



**The “Ruth Plummer” Grande Parade of Boats and
Cavalcade of Sail.
Incorporating
The 6Ft6 Wines Concourse d’Elegance for Wooden
Yachts
The Cayzer Boats Concourse d’Elegance for Wooden
Power Boats
The Lin and Larry Pardey Concourse d’Elegance for
Wooden Yachts (Under 30ft)**

1. The Parade Area and Cavalcade additional directions are shown in Attachment “C”

2. **SCHEDULE OF EVENT:**

| DATE: | ASSEMBLY TIME: | START TIME: |
|-------------------------------|-------------------------|-------------|
| Sun 13 th Mar 2016 | From approx. 11:00 hrs. | 11:30 hrs. |

3. **THE COURSE:**

- 3.1 The course will pass to the North of the RGYC Marina and Cunningham Pier, Geelong. It is intended that the wind will be aft of the beam for boats taking part in the Parade.
- 3.2 If the wind is from the **North, North-East, East, South-East or South**, the course will be laid with the starting line to the North-East of the RGYC Marina, and boats will sail/motor westwards towards Cunningham Pier.
- 3.3 If the wind is from the **North-West, West or South-West**, the starting line will be to the North of Cunningham Pier, and boats will sail/motor eastwards towards Limeburners Point.

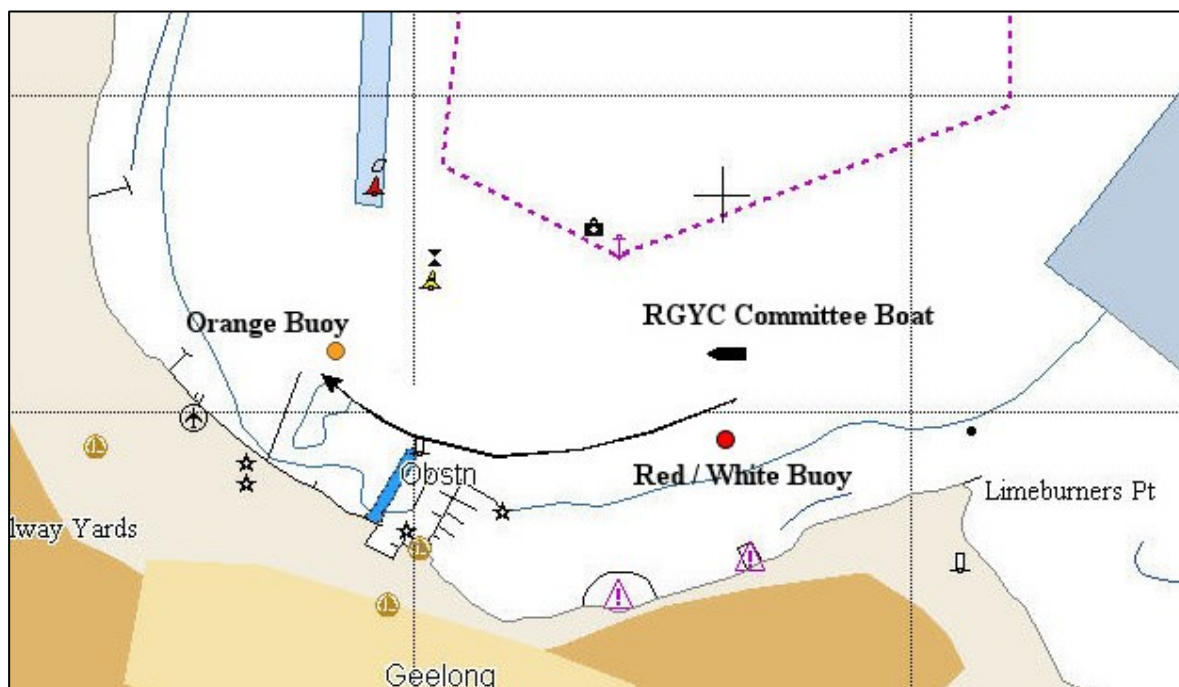
4. **THE MARKS:**

The marks will be as indicated in Attachment “D”

Attachment “D”

All yachts, whether racing or not, and all power boats are invited to participate in the

GRAND PARADE OF BOATS AND CAVALCADE OF SAIL



SAIL PAST DIRECTIONS

1. At approx. 11:00 vessels leave RGYC Marina and assemble near RGYC Committee Vessel, which will be stationed to either the North-West or North-East of the RGYC Marina depending on wind direction. (As per course directions) The starting line for the Parade will be between the Committee vessel and a red & white buoy.
2. At 11:30 the RGYC Committee Vessel will make a sound signal. RGYC inflatable rescue boats will then lead the Parade of Boats and Cavalcade of Sail. Yachts/sailing vessels are requested to then follow in an orderly manner so as to present one or two continuous lines of craft passing the foreshore.
3. Power boats should form their own massed contribution and follow at the rear of the yachts/sailing vessels. Power boats should not exceed the sailing speed of the yachts/sailing vessels.
4. As indicated in the course directions, the direction of the Grande Parade and Cavalcade of Sail will be determined on the day.

APPENDIX “E”



The VRCA Navigation Rally for Wooden Boats

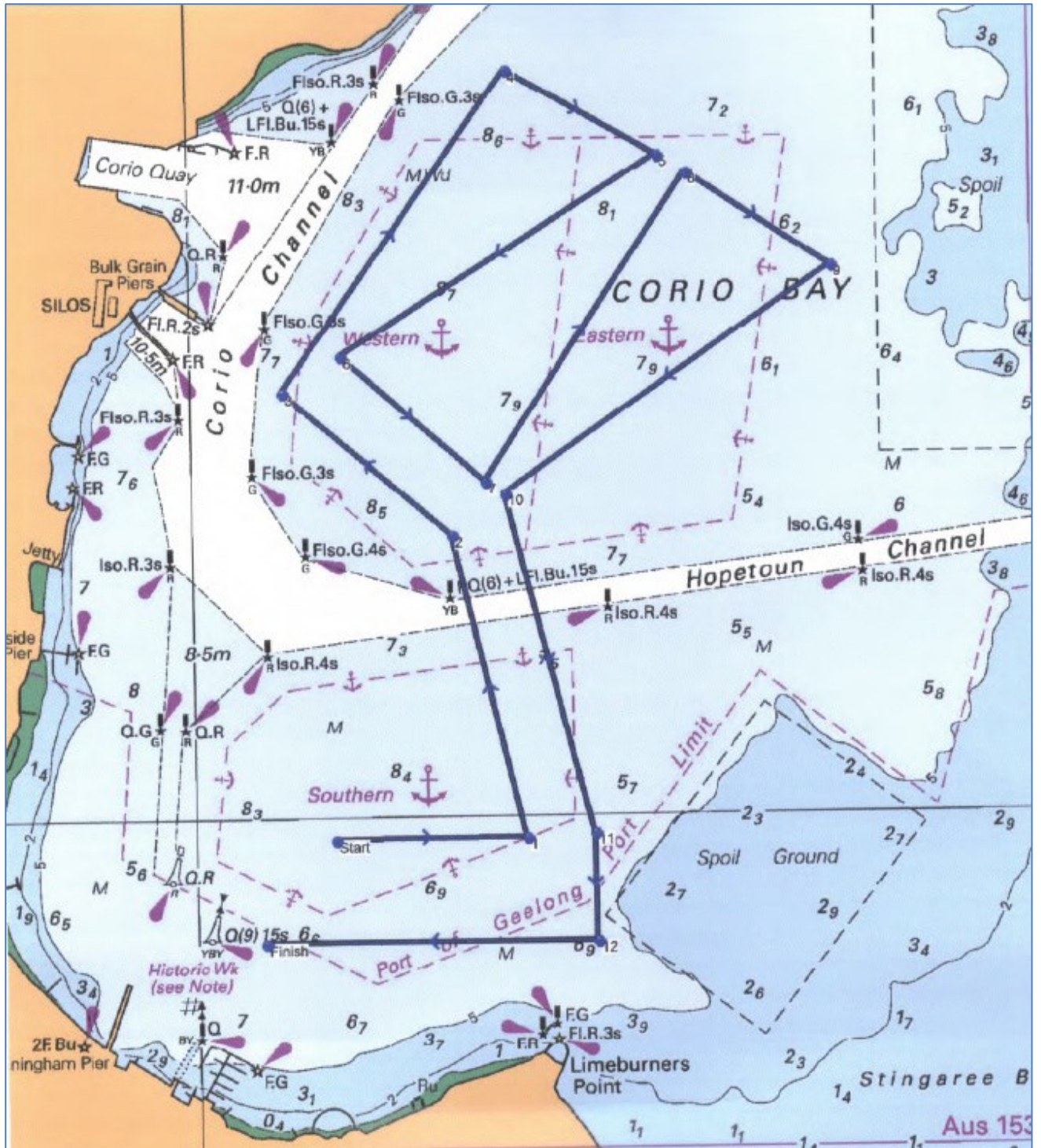
Sunday 13th March 2016

Entries Close 5pm Tuesday 8th March 2016 to allow scheduling & notification of Skipper Start Times.

Course Instructions:

| START LATITUDE 38 ⁰ 08.0600 S LONGITUDE 144 ⁰ 22.4370 E | | | |
|--|----------------|--------------------------------|--------------------------------|
| LEG | TURN TO | LEG DISTANCE NAUTICAL MILES | LEG BEARING DEGREES° (TRUE) |
| 1 | Port | 0.48 | 089° |
| 2 | Port | 0.78 | 346° |
| 3 | Starboard | 0.55 | 310° |
| 4 | Starboard | 0.98 | 035° |
| 5 | Starboard | 0.44 | 119° |
| 6 | Port | 0.94 | 238° |
| 7 | Port | 0.48 | 131° |
| 8 | Starboard | 0.92 | 033° |
| 9 | Starboard | 0.43 | 123° |
| 10 | Port | 1.00 | 235° |
| 11 | Starboard | 0.89 | 165° |
| 12 | Starboard | 0.27 | 179° |
| | Head to Finish | 0.84 | 270° |
| TOTAL NAUTICAL MILES 9.00 NM | | | |
| FINISH LATITUDE 38 ⁰ 08.3305 S LONGITUDE 144 ⁰ 22.2077 E | | | |

VRCA NavRally Course Map



“Not to Scale” Do not use for navigation



The Wooden Boat Festival NavRally Sunday 13th March 2016



ENTRY FORM

BOAT NAME:.....**REG NO:**.....

YACHT CLUB:..... **BOAT LENGTH:**.....

NOMINATED SPEED (KNOTS)

SKIPPER:..... **PHONE NO:**.....

NAVIGATOR:..... **PHONE NO:**.....

EMAIL ADDRESS:.....

I HEREBY DECLARE THAT I WILL ACCEPT THE JUDGES AND/OR NAVRALLY COMMITTEE DECISIONS ON PLACINGS AS BEING FINAL. I HEREBY ABSOLVE THE ROYAL GEELONG YACHT CLUB AND ITS OFFICIALS AND MEMBERS FROM ANY LIABILITY FOR ANY INJURY OR DAMAGE WHICH MAY OCCUR IN RELATION TO THIS NavRally.

SIGNATURE OF SKIPPER/NAVIGATOR.....

DINNER: The "Wooden Boat Festival Dinner" at RGYC. Prizes, Presentations & Screening of the NavRally plus Guest Speaker, Tim Jarvis will present on his epic re-enactment of the famous Shackleton Antarctic Voyage.

Neat Casual Dress. Tables of 10, \$60pp by pre-purchased Ticket from RGYC Office 5229 3705.

Individual boat starting times will be sent to all entrants at the email address nominated above, on receipt of a signed entry form at the RGYC OFFICE or info@rgyc.com.au

ENQUIRIES TO: John Terracall Mobile 0418 316 109 Fax 5222 8233 or
Email john@terracalls.com.au

ENTRIES CLOSE 5PM on TUESDAY 8th March to allow scheduling & notification of Vessel Start Times